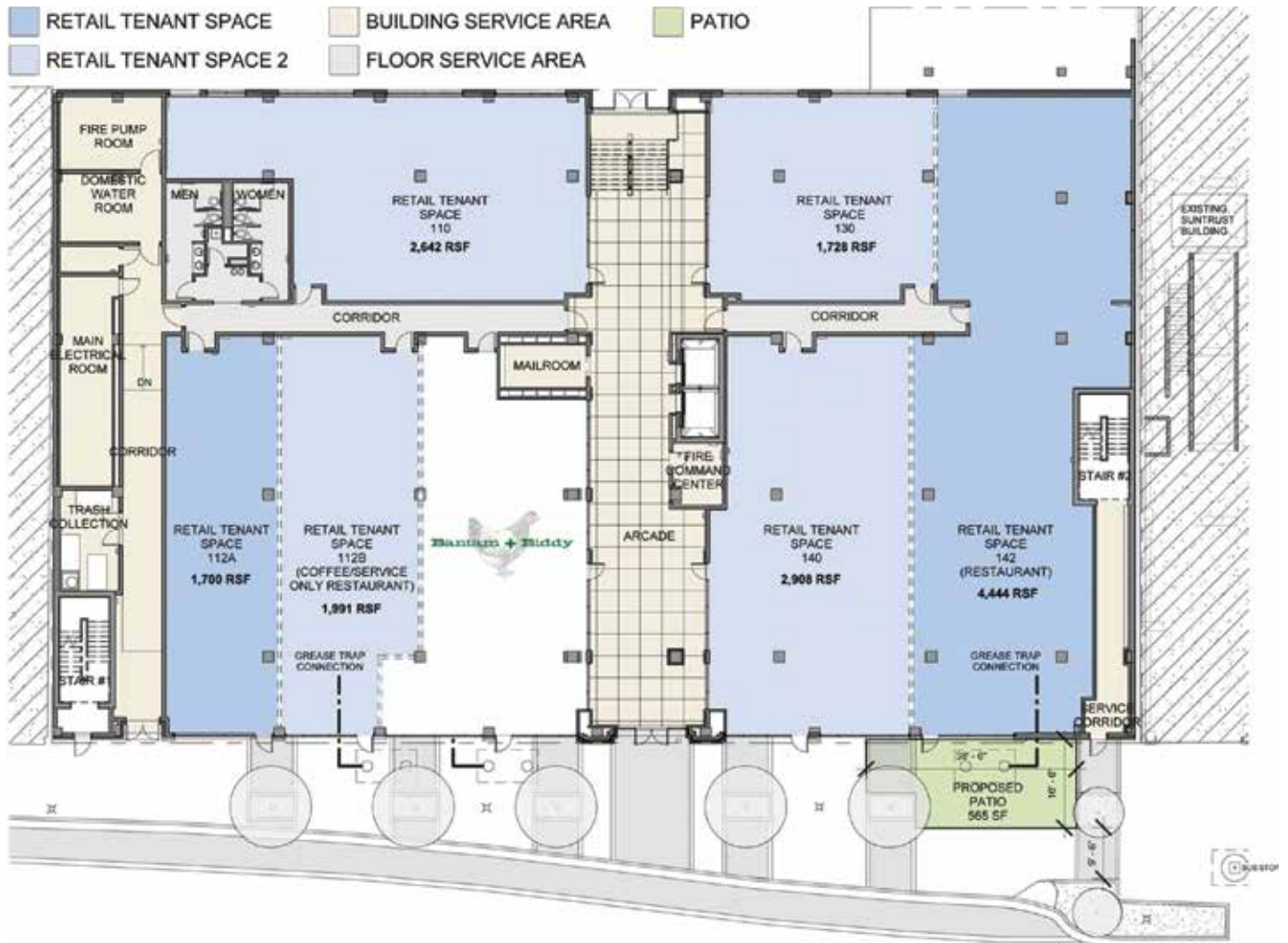


Ground Floor

RETAIL SPACE



Imagine opening your doors to customers in a space that's located in the heart of the city.



MARKET CITY CENTER

A space that not only showcases your business, but is part of this city's growing and vibrant central business district. Market City Center offers over 17,000 RSF of ground floor retail and restaurant space. This is an opportunity for business owners to establish a visible presence in a place that is nothing but first-class from the ground floor up.

Ground Floor

RETAIL SPACE

INTERIOR FINISH

Owner provided finishes in Arcade, restroom corridor, and restrooms (refer to finish board)

- Ceramic tile floors w/ tile base
- Wall tile at elevators and restroom wet walls, paint scheme with accents
- Finished arched ceilings in arcade, exposed ceilings in corridor and restrooms
- Combination of recessed and pendant light fixtures

Back of house spaces

(service corridors and trash/electrical rooms)

- Sealed concrete or VCT with rubber base
- Painted walls
- Exposed ceilings
- Utility light fixtures

Retail spaces will be warm shell

- Unfinished concrete floors, slab completion by tenants
- Corridor demising walls will be taped and floated on retail side, left unpainted
- Exposed ceilings, unpainted
- Utility light fixtures, minimum required per code
- Mechanical units sized for estimated space; exhaust louvers, intake duct to louvers in storefront, and supply trunk only

THE SPACE

- 17,817 RSF
- \$25 - \$30 sf/yr

110 2,642 RSF	112B 1,991 RSF	140 2,908 RSF
112A 1,700 USF	130 1,728 USF	142 4,444 RSF

FEATURES

- EPB Fiber Optic Internet
- Grease Trap Connections (Units 112B, 112C, & 142)
- Market City Center is LEED® Certified™ Silver



USGBC® and the related logo are trademarks are owned by the U.S. Green Building Council and are used with permission.



MARKET CITY CENTER

*For more information please contact
Robert Bridges, Director of Leasing.
423-402-7711 / bob@simpsonorg.com*